



e-ISSN: 2319-8753 | p-ISSN: 2347-6710

IJRSET

International Journal of Innovative Research in
SCIENCE | ENGINEERING | TECHNOLOGY



INTERNATIONAL JOURNAL OF INNOVATIVE RESEARCH

IN SCIENCE | ENGINEERING | TECHNOLOGY

Volume 13, Issue 4, April 2024

ISSN INTERNATIONAL
STANDARD
SERIAL
NUMBER
INDIA

Impact Factor: 8.423

9940 572 462

6381 907 438

ijrset@gmail.com

www.ijrset.com

A PoseFit: Real-time Fitness Tracking and Calorie and Pose Estimation

DR. S. Jeeva, Ayush Kumar, Suvadip Hazra, Anuchana Vinod, Shubham Kumar

Assistant Professor, Dept. of ISE, Faculty of Engineering and Technology, Jain (Deemed-to-be-University),
Bangalore, India

UG Student, Dept. of ISE, Faculty of Engineering and Technology, Jain (Deemed-to-be-University), Bangalore, India

UG Student, Dept. of ISE, Faculty of Engineering and Technology, Jain (Deemed-to-be-University), Bangalore, India

UG Student, Dept. of ISE, Faculty of Engineering and Technology, Jain (Deemed-to-be-University), Bangalore, India

UG Student, Dept. of ISE, Faculty of Engineering and Technology, Jain (Deemed-to-be-University), Bangalore, India

ABSTRACT: The "PoseFit" extension could be a leader in the intelligent wellness app space since it uses powerful computer vision techniques to estimate a user's position in real time while performing arm twist exercises. The initiative challenges the status quo of wellness monitoring by providing customers with individualized, real-time feedback on exercise techniques, repetition counting, and calorie estimation. By coordinating the MediaPipe library, the innovation ensures dependable body movement tracking, promoting optimal posture and reducing the risk of injury. The user interface places a strong emphasis on the client's participation by providing real-time visual coaching and feedback to achieve adequate workout progress. Beyond basic movement, "PoseFit" incorporates features like customized customer profiles for more accurate calorie assessment and the recording of training history. By adding smart visualizations and motivational elements, the app transforms into a comprehensive health companion that encourages client participation and promotes a holistic approach to happiness.

KEYWORDS: PoseFit, Intelligent wellness app, computer vision techniques, arm-twist exercise, real-time feedback.

I. INTRODUCTION

In this era of inventive integration into daily life, wellness enthusiasts want contemporary arrangements that not only provide real-time, intelligent feedback on their actions, but also function as a sort of screen. To address this need, the "PoseFit" extension provides an advanced exercise plan that makes use of real-time posture estimate, exercise tracking, and calorie computation. "PoseFit" uses computer vision computations and the MediaPipe Posture Estimation library at its inception to let clients to perform arm twist exercises while receiving immediate feedback on their body. In addition to anticipating the number of calories burned during exercise, the program not only virtually checks repetitions but also provides a whole wellness experience.

This effort promises to transform traditional exercise after techniques by applying cutting-edge developments, resulting in a more specialized and informed approach to wellbeing. "PoseFit" longs for Give customers a dynamic and unique wellness companion with a user-centric plan and customized highlights, and transform the intersection of wellness and innovation. The remaining sections will delve into the project's details, examining its tactics, features, and the problematic impact it hopes to have on the smart wellness applications space. This study emphasizes how useful machine learning and computer vision are to the wellness sector. In addition to meeting consumers' immediate need for precise exercise regimens, "PoseFit" establishes the groundwork for a future when innovation will be a key component of intuitive and custom-fit health programming. This code transforms a basic camera into an energetic wellness coach by leveraging the features of the MediaPipe Posture Estimation library. When clients conduct arm twist exercises, they receive immediate feedback on their body, which ensures accuracy and reduces the risk of injury. Additionally, "PoseFit" surpasses expectations by having thinkers monitor repetitions and anticipate calorie usage during each exercise. "PoseFit" appears to be a trailblazing enterprise in a time when health-conscious individuals are looking for more advanced but accessible ways to increase their physical activity. By fusing real-time posture assessment with exercise monitoring, "PoseFit" surpasses traditional wellness programs and provides users with an unparalleled degree of accuracy and association in their workouts.

II. POSE DETECTION BASICS

PoseFit's main goal is to create an intelligent training experience by using computer vision breakthroughs to estimate a user's position in real time while performing arm twist exercises. The project's goals are to provide clients with updated feedback on their training regimen, double-check repetitions, and calculate calories burned. The exercise emphasizes how important it is to continue refining and adapting to underutilized innovation. Future possible outcomes include ways to maintain long-term client relationships, underutilized highlights for a wider range of works out, and improvements to pose assess precision.

1. Real-Time Posture Estimation: By utilizing the MediaPipe library's capabilities, PoseFit uses advanced computer vision technologies to determine postures in real time. This innovation encourages real-time position estimation, which enables the framework to perfectly track important places on the user's body throughout arm twist exercises. PoseFit uses cutting-edge computations to identify and screen locations of interest like wrists, elbows, and shoulders, providing precise and active input on workout form.

2. Customized Feedback: PoseFit's strategy revolves around providing clients with tailored feedback. The invention provides quick feedback on exercise form when performing arm-twist exercises. This adaptable coaching framework provides remedial recommendations to advance sound pose and reduce the risk of harm by tailoring input depending on the user's unique body actions.

3. Calorie Estimation: PoseFit conveys an progressed calorie forecast highlight by joining individualized client profiles. Clients enter individual data such as weight, stature, and age, which permits the framework to compute an individual's metabolic rate. When combined with movement information, this gives customers an gauge of calories burned amid arm twist sessions, making strides the complete wellness observing involvement.

4. Client Interface: The layout of PoseFit's client interface is designed to provide a seamless and secure experience. Real-time coaching highlights adapt to the user's motions to provide visual cues for performing exercises at their best. The preparing experience is made both teacher- and lock-in-friendly by the interface's simple controls and visualizations. Fast feedback on a client's approach, repetition count, and caloric expenditure advances the entire exercise experience.

5. Motivational Elements: The design of PoseFit's user interface provides a seamless and secure engagement. Real-time coaching highlights adapt to the user's actions to provide visual cues for performing workouts in the best possible way. The controls and visuals on the interface make it easy to use and make the preparation process both engaging and educational. Customers receive prompt feedback on their technique, redundancy assessment, and caloric expenditure, which enhances the whole exercise experience.

III.VULNERABILITIES IN POSE ESTIMATION

In order to enhance the overall strength and safety of the "PoseFit" program, the advancement team needs to fix these vulnerabilities by doing extensive testing, following recommended security practices, and regularly monitoring and updating the software.

1. Security Concern: The "PoseFit" activity raises potential security concerns when managing customer information for individualized interactions. It is imperative to gather and securely store personal information and work history to prevent unauthorised access or security breaches.

2. Security of Client Profile: Robust authorization and confirmation protocols are fundamental to safeguarding client profiles, ensuring that only duly authorized clients can access and modify sensitive data. These security layers are strengthened to protect user accounts from unwanted disruptions.

3. Precision in Posture Estimation: External factors such as brightness may affect how accurately "PoseFit" interprets a person's body growth. Extensive testing and adaptation to many settings are necessary to ensure trustworthy criticism.

4. Information Transmission Security: Communication encryption is essential in the unlikely event that an application requests the transfer of information via systems. This protects customer data during transmission, averting risks that could include eavesdropping or unapproved use.

5. Calculation Vigor: The application's convenience is determined by how adaptable its pose estimate and checking computations are to variations in client actions, body types, and training scenarios. Strength assurance advances the application's overall steadfastness.

6. Dependency on Equipment: Because "PoseFit" relies on computer vision via a webcam, it is extremely susceptible to problems with client cameras or equipment malfunctions. Any hardware-related problems that will affect how the application operates must be examined by engineers.

7. Adaptation Challenges: As the clientele grows, the project needs to take into account potential adaptation problems to ensure that server engineering can accommodate increasing demand without slowing down. Being versatile is essential to ensuring a trustworthy customer experience.

IV. SECURITY

Security precautions and scheduled upgrades have been thoroughly examined to guarantee the "PoseFit" venture against potential attacks. Complete encryption Modern technologies—most notably HTTPS—have been regularly used to ensure secure information flow. The use of multi-factor authentication (MFA) and the approval of complex secret word confinements have strengthened client confirmation and advanced account security substantially. The following are significant developments and security measures:

1. End-to-End Encryption: To ensure data security and privacy during information exchange between the PoseFit server and the client application, use reliable end-to-end encryption techniques, including HTTPS.
2. Verification Upgrade: To strengthen client confirmation using complex secret word rules and the display of multi-factor verification (MFA), and to advance overall account security. Examine more advanced biometric confirmation setups for client confirmation that is integrated.
3. Information Approval and Sanitization: To improve account security generally, strengthen client confirmation by presenting multi-factor authentication (MFA) and employing complex watchword rules. Examine more advanced biometric verification setups for client confirmation that is included.
4. Safe API Hones: Establish safe coding practices for PoseFit APIs, taking into account appropriate permission and verification procedures and the use of API keys with limited and clearly specified rights. Examine using OAuth for client authorization and secure API access.
5. Standard Security evaluations: To find and fix potential vulnerabilities in client and server components, conduct security visit evaluations that involve code audits and entry testing. Innovations in robotic security checking must be used to ongoing defenselessness evaluations.
6. Checking and Logging: To enable ongoing monitoring and identifiable evidence of potential security vulnerabilities, execute point-by-point client action recording, pose information preparation, and set up framework occasions. Log inspection can be advanced by using machine learning techniques to detect unusual designs that indicate security vulnerabilities.
7. Rate Restricting: In order to prevent misuse and lessen the impact of potential Denial of Service (DoS) attacks, employ rate-limiting techniques to ensure the long-term availability of the system. Implement a dynamic rate limit based on the location and behavior of the client.
8. Client training: Stress security best practices such the use of strong, unique passwords, identifying social design attempts, and receiving encouraging messages from PoseFit through client training. to provide intuitive training, in-app security advice, and customer information.
9. Standard Program Updates: Stay up to date with the most recent versions of all software components, including third-party libraries and settings, to address any vulnerabilities found and guarantee overall framework security. Employ automated overhaul alerts to notify customers of upcoming security updates.
10. Create and supervise an incident response plan that addresses and mitigates security risks as effectively as possible. This plan should include communication strategies and steps to restore regular operations. Standard tabletop exercises should be carried out to verify the effectiveness of the event reaction process and suggest areas for modification.

V. RESULT AND DISCUSSION

In the fig 1, A fundamental part of the Hand Twist project, the client login chart promotes safe access and customized client interactions. Clients can safely authenticate themselves with the client login feature ensuring that only authorized users can use the application's functionalities. After a successful login, users are granted access to a dashboard that is tailored to their preferences and fitness background. This dashboard provides a uniform experience, enabling users to monitor their progress, create goals, and explore various exercise regimens.

Additionally, by protecting sensitive client and exercise data, the client login utility improves information security. The program ensures that customer information is protected from illegal access and kept confidential by requesting confirmation.

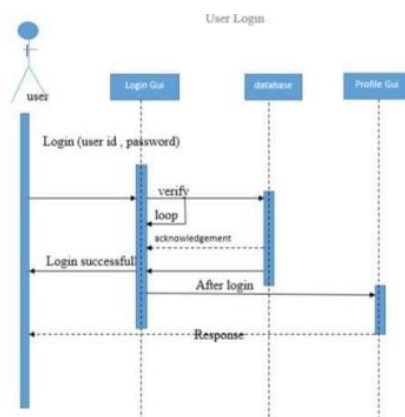


Fig. 1 User Login Diagram

VI.CONCLUSION

The "PoseFit" project adopts a revolutionary strategy for wellness by fusing real-time pose estimate for advanced prepared interactions with state-of-the-art computer vision innovation. By coordinating the MediaPipe library, the innovation enables accurate and stable recording of body developments, supporting appropriate stance and reducing the risk of wounds during arm twist workouts.

Providing clients with precise repetition counting, calorie burn indicators, and customized workout plans are the main goals of the extension. PoseFit goes beyond simple action tracking by using machine learning algorithms to modify exercise routines based on individual goals and wellbeing levels. Real-time visual coaching and interaction via the client interface contribute to an engaging and immersive exercise experience. PoseFit becomes a comprehensive wellness partner with the addition of gamification elements including challenges, grants, and rewards. This not only creates a stable wellness community but also strengthens client cooperation. By gathering extra biometric data, such as heart rate and calories burned, the system's network of wearable devices expands its capabilities and makes estimates more accurate. Additionally, long-term plans include enhanced position investigations, online wellness courses, and global wellness competitions. With these enhancements, PoseFit will become a more dynamic and creative platform by advancing user interaction. Finally, PoseFit may represent a significant advancement in the field of intelligent fitness applications by providing users with a holistic perspective on health and wellness. Its unique features, in-the-moment feedback, and customized adaptation establish it as a comprehensive and invaluable tool for anyone looking for a wellness trip that is both energetic and accommodating. PoseFit is designed to take into account mechanical changes as they occur, maintaining its dominance in the interactive exercise space. In the dynamic sector of wellness and innovation, PoseFit could be a testament to the promise of using contemporary computing gadgets to enhance individual well-being. The exercise doesn't exactly alter our perspective on working out, but it does highlight the evolving possibilities of real-time feedback and individualized coaching.

Because of the precision of pose assessment and the strength of the machine learning computations, PoseFit may be a dependable and outstanding training partner. By focusing on sound strategy and providing targeted counseling, clients are developing a deeper understanding of their physical capabilities and limitations. PoseFit's gamification features add enjoyment and incentive, transforming exercise routines into captivating tasks. Rewards and achievements provide people with something to look forward to in their wellness endeavors and foster a sense of unity and triumph. Instead of just working out, people are effectively locked in a dynamic and steady wellness environment thanks to this unique combination of innovation and driving force. Looking ahead, the projected future scope offers a plethora of intriguing potential outcomes, ranging from virtual health courses and global challenges to improved posture examination. These opportunities highlight PoseFit's commitment to ongoing innovation and adaptation to emerging trends, ensuring that customers benefit from the most recent advancements in fitness technology.



REFERENCES

- [1] The investigation and analysis on fitness coaches of fitness clubs in Wuhan Yan Sun; Qun Liu 2010 Second International Conference on Communication Systems, Networks and Applications
- [2] The iFit: An Integrated Physical Fitness Testing System to Evaluate the Degree of Physical Fitness of the Elderly Kevin C. Tseng, Alice May Kuen Wong, Chien-Lung Hsu, Tsai-Hsuan Tsai Chang-Mu Han, MingRen Lee.
- [3] Strength Training: A Fitness Application for Indoor-Based Exercise Recognition and Comfort Analysis, Dipankar Das; Shiva Murthy Busetty; Vishal Bharti; Prakhyath Kumar Hegde.
- [4] Fitness functions for the unconstrained evolution of digital circuits Tuze Kuyucu; Martin Trefzer; Andrew Greensted; Julian Miller; Andy Tyrrell.
- [5] The research on WebGIS-based information integration and data analysis platform for China's Physical Fitness and the National Fitness Program Yaping Zhong; Weihong Hu.
- [6] Prediction of New Media Communication of Fitness Culture and Its Influence Factors Chi Zhang; Xiaoli Hu 2022 International Conference on Culture-Oriented Science and Technology (CoST)
- [7] Design and Implement a Mobile Fitness Application based on Realtime Image Detection Hsien-Yu Kao; Yih-Jiun Lee.
- [8] Research on Physical Fitness Grading Model of Swimming Training Based on Real-Time Cloud Computing Liqun Su; Li Yang 2020 International Conference on Advance in Ambient Computing and Intelligence (ICAACI).



INTERNATIONAL
STANDARD
SERIAL
NUMBER
INDIA



INTERNATIONAL JOURNAL OF INNOVATIVE RESEARCH

IN SCIENCE | ENGINEERING | TECHNOLOGY

 9940 572 462  6381 907 438  ijirset@gmail.com



www.ijirset.com

Scan to save the contact details